

# Interior Design Newsletter

## Council for Interior Design Accreditation Site Visit

The Council for Interior Design Accreditation (CIDA) visited the Interior Design Program March 23-27<sup>th</sup> to review our student work display, interview faculty and students, and tour our facilities. The CIDA site visitors enjoyed their time at Mississippi College and were very impressed by our program. They recommended a full six-year accreditation and will submit a visiting team report to the CIDA Board of Directors early summer. The CIDA Board of Directors will make a final decision regarding our accreditation status and notify us early August.



Student Work Display



## Interior Design Field Studies Trip ASID Design Summit in Fayetteville, Arkansas

Interior design students and faculty traveled to the University of Arkansas for the American Society of Interior Designers South Central Chapter Design Summit, April 5-8<sup>th</sup>. Students and professionals gathered for exceptional speakers, workshops, tours, networking, and a student design competition. Several of our students won awards in the student design competition, which included student entries from Arkansas, Louisiana, and Mississippi. Student winners are listed to the right.

- Silver in Hospitality – Madeline Trimble, Beverly Philley, and Yewei Chen
- Silver in New Student Spotlight – Madeline Trimble
- Bronze in Computer Generated Design – Yewei Chen
- Bronze in Workplace Design – Yewei Chen
- Bronze in Healthcare Design – Hind Almarwani, Elizabeth Skirkey, and Kella Wood
- Bronze in Residential Design – Madison Lewis
- Bronze in Healthcare Design – Beverly Philley
- Bronze in Hospitality Design – Beverly Philley

# Interior Design Newsletter

## South Central Chapter ASID Professional Design Awards

Congratulations to Mrs. Baumann for winning several awards at the ASID South Central Chapter Awards Gala! The Awards Gala took place during the ASID SCC Design Summit on Saturday, April 7<sup>th</sup> in Fayetteville, AR. Mrs. Baumann won the following awards:

- Silver for Residential Bath
- Bronze for Design Detail
- Gold for Residential Kitchen
- Residential Ovation for Best Residential Design Project of 2017-2018

Congratulations Mrs. Baumann!



### Salvation Army Donations

As part of a community service project, the Interior Design Program donated gently used items to Salvation Army this semester.

Thanks to faculty and students for your donations!



### Cross – Curricular Project with Graphic Design

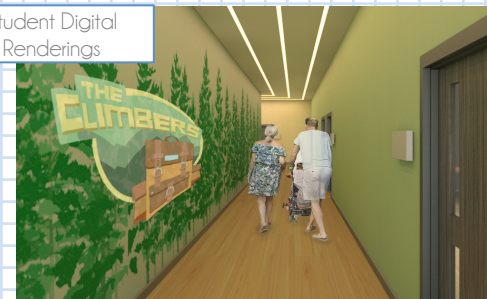
ART 372 Interior Design IV students participated in a cross-curricular project that included Mississippi College Graphic Design students. Interior design students were required to design a Christian Life Center and worked with graphic design students to develop logos and other graphics that aided in space planning and way finding throughout the facility. This is a wonderful opportunity for interior design and graphic design students as they develop critical listening skills and learn to collaborate with individuals from a related discipline.



Student Digital Renderings



Student Digital Renderings

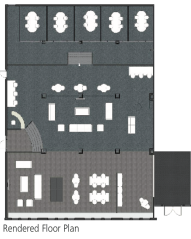




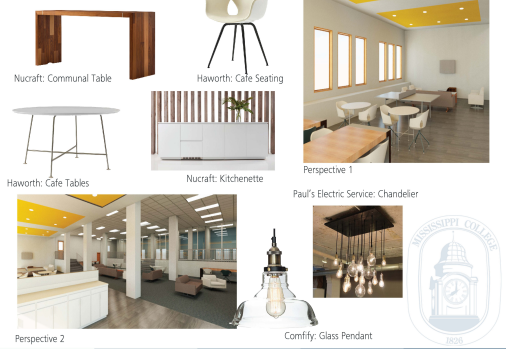
# Interior Design Newsletter

## The Commons

The Mississippi College commons is an area in which students can meet to study, to gather for social events, or to just hang out. With a clean, modern aesthetic this space is perfect for all types of gatherings and provides just the right amount of style and function that a college student seeks. The commons is a multi-purpose space, providing a "cave" and kitchenette area, a TV area, multiple study rooms, and a large multi-functional area in the middle. The multi-functional area allows for a separation of spaces, while keeping the whole room open with frosted glass panels. The furniture chosen for the commons can be used in different ways, allowing for flexibility with the design of the space as well as the amount of floor space needed at any given time. The color scheme embodies Mississippi College spirit while remaining subtle in some areas and accented in others. The floors use both carpet and LVT wood planks, providing adequate acoustics to the space. Overall, this space provides a freshly renovated take on an integral part of student life and community.



## The Commons

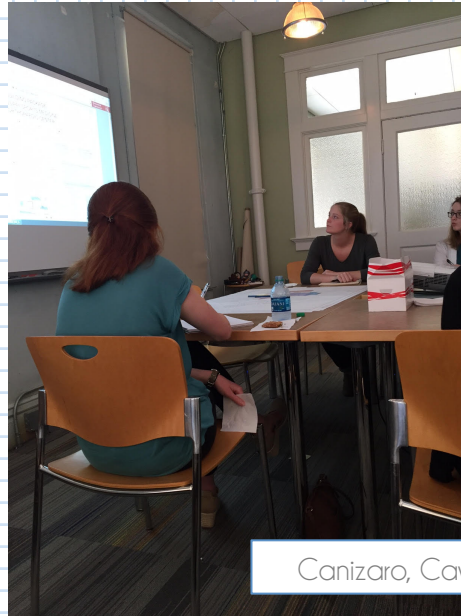


## Art 430 Building Construction Field Trip

ART 430 Building Construction students visited Canizaro Cawthon and Davis Architecture Firm to learn more about the firm and their projects and discuss building construction methods.

## The Commons Project

ART 372 Interior Design IV students worked with Mississippi College's Student Government Association to develop a design proposal for the Commons located on MC's campus. Interior design students presented ideas in order to renovate the space to better fit the needs of students on campus.

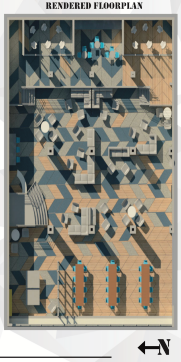


Canizaro, Cawthon, and Davis

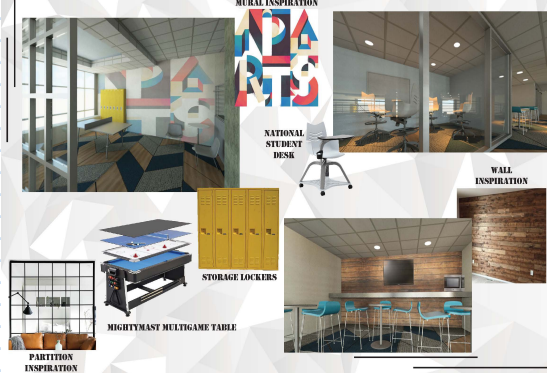
## THE COMMONS

After renovations the Commons will have an industrial aesthetic while being a light and airy space that welcomes people into it. When entering the Commons the entrance will be widened allowing for more visibility of the whole room. The space that is immediately to the left of the entrance will now have three community tables that allow large groups to gather, and encourage people to stay and have coffee together. The flooring in this space will be an LVT so any spills or messes could be cleaned up easily. The ping pong space will now be a multi-use table gaming space with a table that is a ping-pong, foosball, and pool table in one. The open space to the right will transition to carpet to avoid an echoing in the space and it will have furniture configurations fit multiple needs of the students. These furniture configurations will consist of lounge seating with small tables, sofas that have a small partition wall allowing some privacy for group work, and bar seating. The large tv will be kept to encourage people to come together for big events that happen after door visitation hours. On this wall there will also be a MC school spirit mural done by the art department.

The study room area will stay the same structurally. Cosmetic updates such as the flooring and paint will all be changed to match the rest of the room. The space between the two study rooms will house a prep station that includes a high top stainless steel table, microwave, and water fountain. This station would be armed at computers to use if they need to heat up food and things of that sort. In this space will also be high top round tables with seating. The study rooms will now have chairs that have tables attached so it makes the narrow space more functional. Throughout the Commons there will be a unified theme that reflects an industrial space that is open and welcoming.



## THE COMMONS



## Senior Exhibit

Congratulations to our seniors! Yewei Chen, Beverly Philley, Callie Reasner, Maddie Trimble, and Jaime Weber have exceptional work displayed in the Spough Gallery.



## MISSISSIPPI COLLEGE INTERIOR DESIGN

Join Us

FOR OUR INTERIOR  
DESIGN OPEN HOUSE

THURSDAY, APRIL 26TH  
4 PM - 6 PM  
FARR HALL

COME AND VIEW THE STUDENT WORK DISPLAY FROM OUR  
RECENT ACCREDITATION SITE VISIT!  
PLUS, TOUR THE RECENTLY RENOVATED INTERIOR DESIGN  
SPACES. REFRESHMENTS WILL BE PROVIDED AND  
ANYONE IS WELCOME!

Created to  
**Create**  
& GRAPHIC DESIGN  
INTERIOR DESIGN  
**Senior Showcase**  
AT THE SAMUEL MARSHALL GORE GALLERY  
199 MONROE STREET • CLINTON, MS 39056  
APRIL 4-16, 2018  
**Reception**  
SUNDAY, APRIL 15  
2-4 PM  
MATT ATKINSON  
RAMSEY BARBER • YEWEI CHEN  
JORDAN RANEY • CALLIE REASNER  
MADDIE TRIMBLE • JAIME WEBER